

Quiet Glamour

Contrasting glossy and matte elements with textured and smooth ones gives a Florida home a crisp and contemporary yet warm demeanor.

WRITTEN BY MARA BOO
PHOTOGRAPHY BY BRIE WILLIAMS
STYLED BY SANDRA L. MOHLMANN

A circle of metallic tie crowns a formal dining area in Randy and Mena Whaley's Florida home. The 11-foot-tall doors were designed in Germany and crafted in Indonesia, then shipped Stateside. "No one in the United States makes hurricaneproof doors that tall," architect Matthew Savoie says.





OPPOSITE: Strong horizontal planes—a hallmark of the home's contemporary sensibility—are delivered in the living room via a marble hearth and walnut cabinetry. The fireplace surround is crafted from stainless steel. ABOVE: The home respects the traditional feel of its neighborhood yet subtly references the Whaleys' more modern tastes. "The fact we were able to pull off that mix is one of the great successes of this house," Savoie says.



Through the process of building nine homes, Randy Whaley has developed a passion for architecture and interior design—so much so that his wife, Mena, left the design of the couple's Florida vacation home almost entirely to her husband. "She said, 'You run with it,'" Randy says. And so he did. Straight to architect Matthew Savoie. "Randy's an idea person," Savoie says. "This house is an evolution of ideas."

Although it's not immediately apparent, the home is an amalgam of styles. At first glance, its exterior heralds a relatively traditional interpretation of Florida plantation-style architecture. A closer look reveals modern influences—along with Randy's contemporary leanings. Obsidian black window frames, straight railings, and satin-nickel gas lanterns hint at the surprises beyond the threshold. "I wanted a house that felt fresh and clean but not hard or cold—a soft version of contemporary," Randy says. "To me, it's all about yin and yang, balance and symmetry. That's what makes things interesting."

Spacious, open, and airy, the Whaleys' house exudes modern serenity. Dramatic ceiling treatments, 11-foot-tall glass doors, and dark-stained Brazilian walnut floors provide a rich architectural backdrop for furnishings sporting sleek lines and minimalist profiles. Pebbled-leather seating, flowing silk draperies, and damask prints are unified by a restrained palette of white, cream, charcoal, silver, and gray. Tides of white marble and mother-of-pearl shimmer around fireplaces and shelves, while silver metal woven into ipe wood and quartersawn oak cabinetry gleams against the warm wood tones. "Wood lends true and honest character," Savoie says. "The trick is mixing it with the right amount of more contemporary finishes."

In the kitchen, Randy and Mena opted for waves of blue melamine cabinetry to honor their home's coastal location. A white penny-tile backsplash, glass shelves, and walls of windows tie into the beach theme. "People think of modern as being institutional and sterile, but all that glass allows for plenty of natural light," Savoie says. "It keeps the house feeling warm and inviting."



LEFT: Kitchen designer Jennifer Fordham created a sophisticated take on modern style in the kitchen by bringing together wood, quartz, glass, marble, chrome, stainless steel, porcelain, and high-gloss melamine. ABOVE: A white laminate-top table custom-made in Italy hosts chairs with wenge backs and white leather seats in the breakfast nook. RIGHT: Metallic silver wallpaper puts a little fun into Mena's streamlined office. The paper's rough feel exemplifies Randy's penchant for unexpected texture.

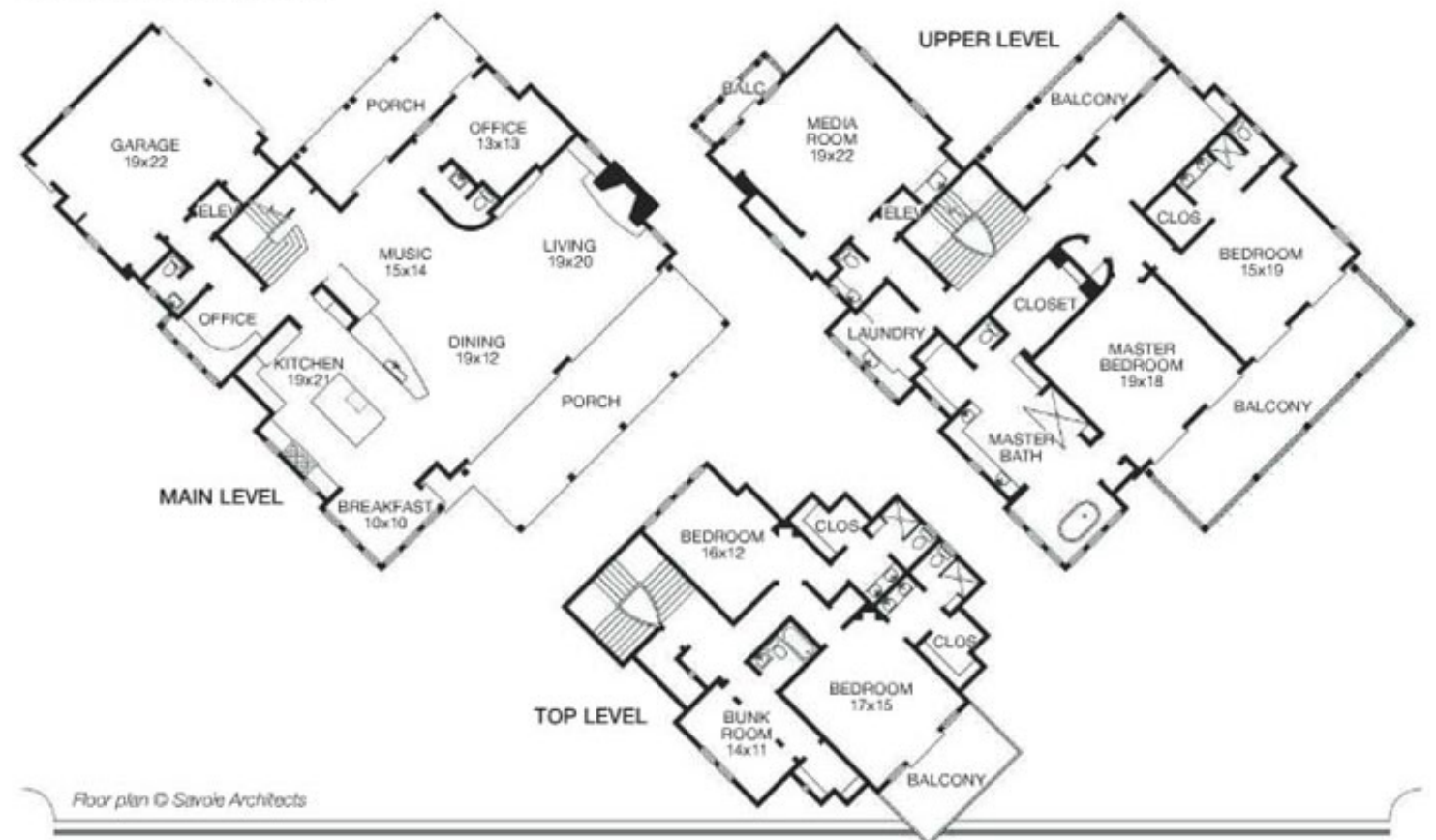


THIS PHOTO: Metallic-looking fabric draperies and a metal-and-glass chandelier lend industrial glamour to the master bath. Solid sheets of white porcelain climb the walls to windowsill height. OPPOSITE: Heavily grained quartersawn oak inset with slender chrome ribbons lines a wall in the master bedroom.



Floor plan

TOTAL SQ. FT: 6,019
 BEDROOMS: 5
 BATHROOMS: 5 full, 3 half



Floor plan © Savoie Architects